

TWaver®

UI Visualization Solutions





TWaver[®] 2D

Since 2003

- Professional GUI toolkit for Telecom industry
- Adopt mainstream client technology
- Provide one-stop component product solution
- Provide professional topology, map, equipment component and other general GUI component such as table, tree and charts.
- Based on open technical standards, speed up the connection with backend and shorten the development time and save your cost.
- Provide plenty of prefabricate telecom business objects and elements
- Efficient and light graphics engine can be deployed on the desktop, or through web browser to present network topology, equipment and maps.

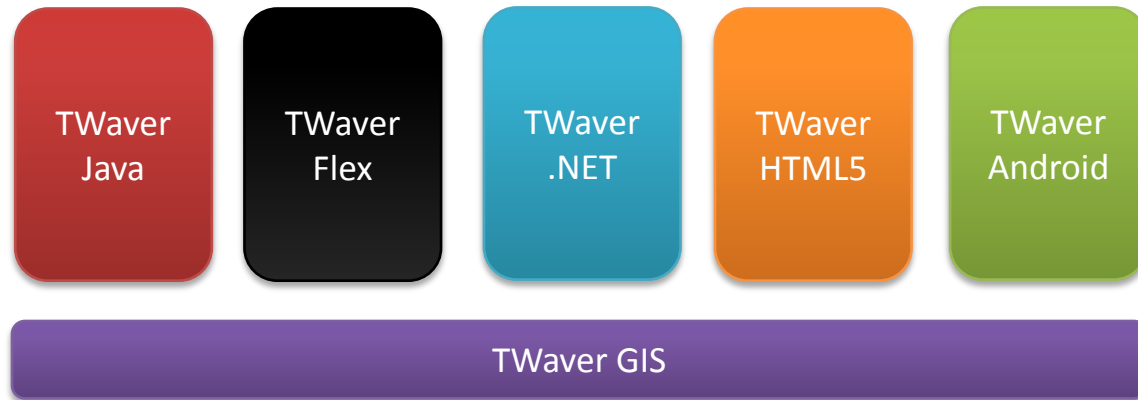


TWaver[®] 3D

Since 2007

- TWaver's newest 3D visualization solution with a 3D rendering engine, a visualized 3D modeling editor, a template library at the industry level and API interfaces for programming.
- Based on TWaver 2D's mature structure and also embraces unique design concepts and technical features.
- Adopted technology such as MVP and ROD (Render-On-Demand), capable to present 20,000 ~ 50,000 3D objects in the browser and operate smoothly
- Highly encapsulated API requires no mastery of 3D techniques. Instead, API makes it possible to create a 3D scenario with only a few lines of code And seamlessly integrated it with your enterprise applications.

TWaver 2D Products Family



network topology, data visualization, map solution
high performance, lightweight, flexible extension, cross platform
always offering high-quality UI solution for the Telecom industry



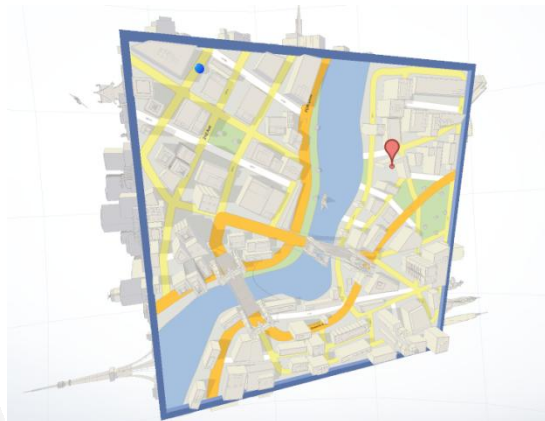
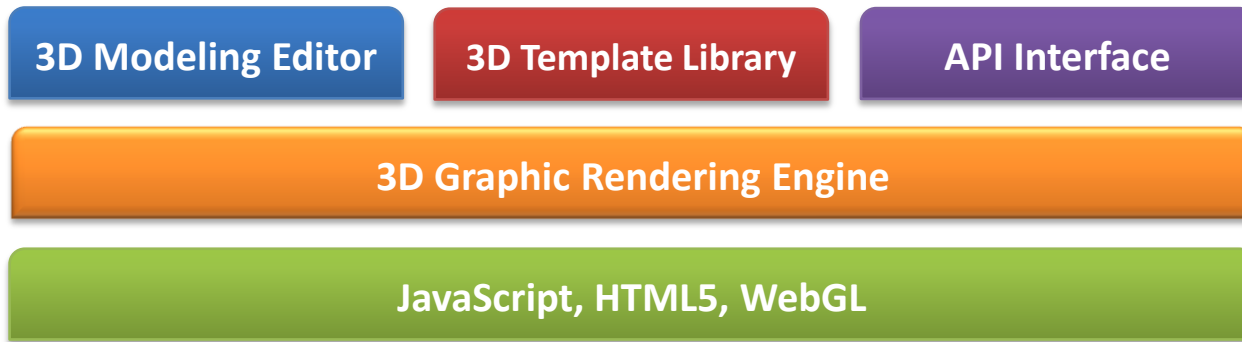


TWaver® MONO DESIGN™

HTML5-based 3D Solution



TWaver 3D Product Structure

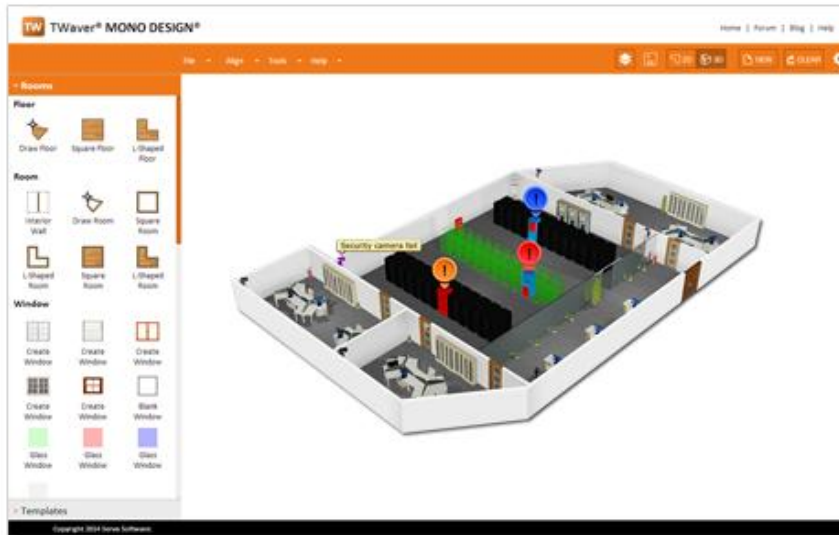




No Coding, Just Drag-and-drop

With our simple, easy-to-use but powerful 3D modeling tool,
all you need to do is drag-and-drop with the mouse,

Without one line of code, only in ten minutes



You will create complex telecom
equipment and data centers ,
and implant them to web applications
based on the browser.

Design without Coding



Supports various browsers
Takes all devices and platforms

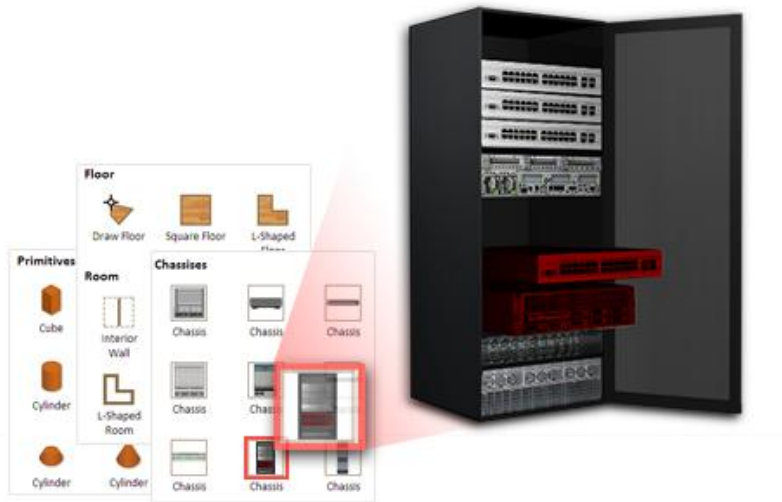
Completely based on the Web technique,
Say “Goodbye” to troublesome plugins
Smoothly run in the mainstream browsers
Suits for the desktop, tablet and mobile platforms

“Modeling once, rendering ever since”



3D Equipment Template Library

Customize for your industry



- MONO DESIGN™ has predefined a 3D equipment template library
- From telecom equipment, data center, industry controller, to architecture, home furniture, and other industries
- Template library makes 3D modeling simpler than ever

API Interface

Getting started at any time

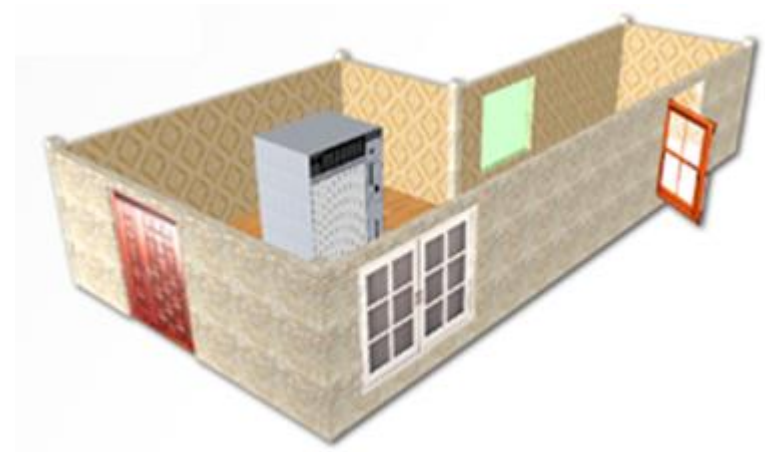
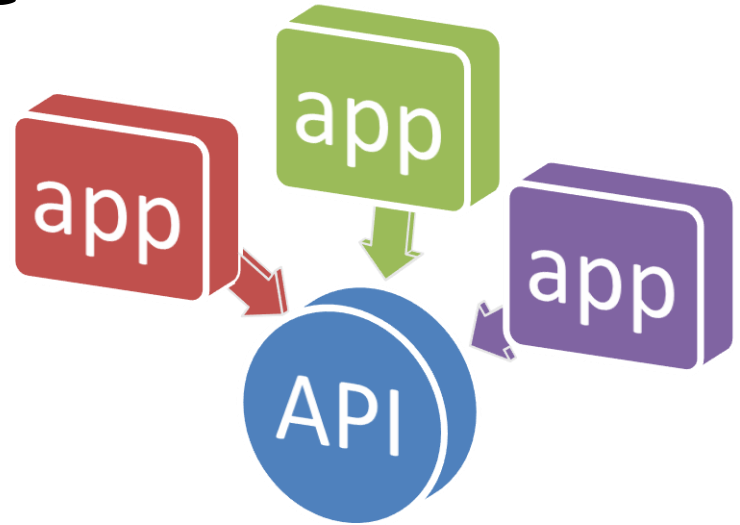
We provide complete API interfaces for 3D application development

Highly encapsulated API requires no mastery of 3D techniques

API makes it possible to create a 3D scenes with only a few lines of code

And seamlessly integrated it with your enterprise applications

```
function createScene() {  
    createRoom();  
    processWalls();  
    layoutEquipments();  
  
    render();  
}
```



To know more about **TWaver**

Please visit

<http://www.servasoftware.com>

OR

Getting Started with

MONO DESIGN™

<http://mono-design.cn>